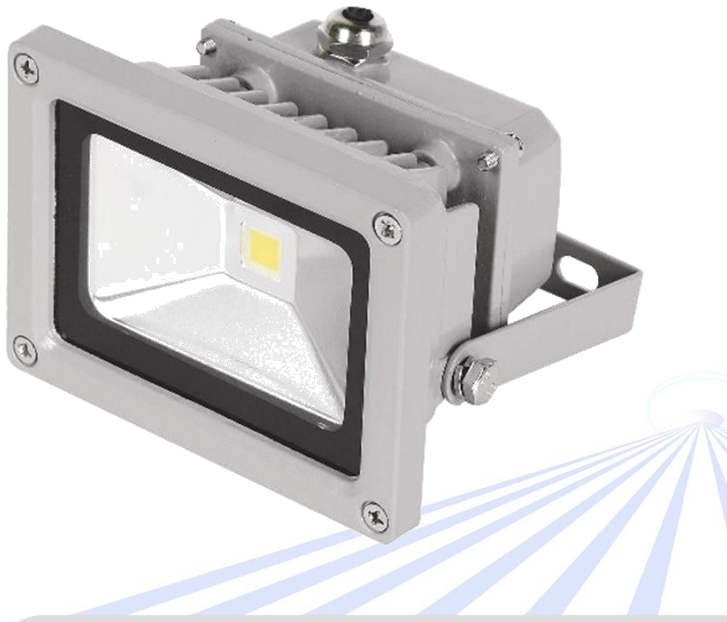


SLED FL 10B LED Flood Lighting



PECIFACATION

LED Flood Lighting

ED Type	COB
LED Q'TY.	1
Frequency (Hz)	47 to 63Hz
Minimum luminous flux(lm)	10148
Input voltage(V)	85~265V AC
Power factor (PF)	≥0.95
LED Watt	10W
Environmental Temperature	- 20°C~60°C
Environmental Humidity	0%~95%
Color index (CRI)	≥75
Safety Type	IP65
Material	Aluminium
Driver	Included
Pcs/Carton	1
Dimension	115*86*85mm

Main Features of Led Flood Lighting

1. high heat conducting efficiency, low lumens depreciation, high light purity, and no double image
2. IP65 standard, free from water, dust and corrosion
3. Breadth working voltage, and constant flow and pressure
4. Environmental protection, no pollution of lead and Hg
5. The decorative effect is wonderful, the surface adopted special process

Illuminant parameters of Flood Lighting

Input Voltage: AC 85V - 265V; LED type: High power led
Frequency (Hz):47 to 63Hz, Color index (CRI): ≥ 80Ra
Power efficiency: ≥ 85 % , Power factor (PF):≥ 0.95
IP65, Color range: 2800 - 7500K

Appearance parameters of Led Flood Lighting

Lamp Body Material: Aluminum
Color of lamp shell: Gray